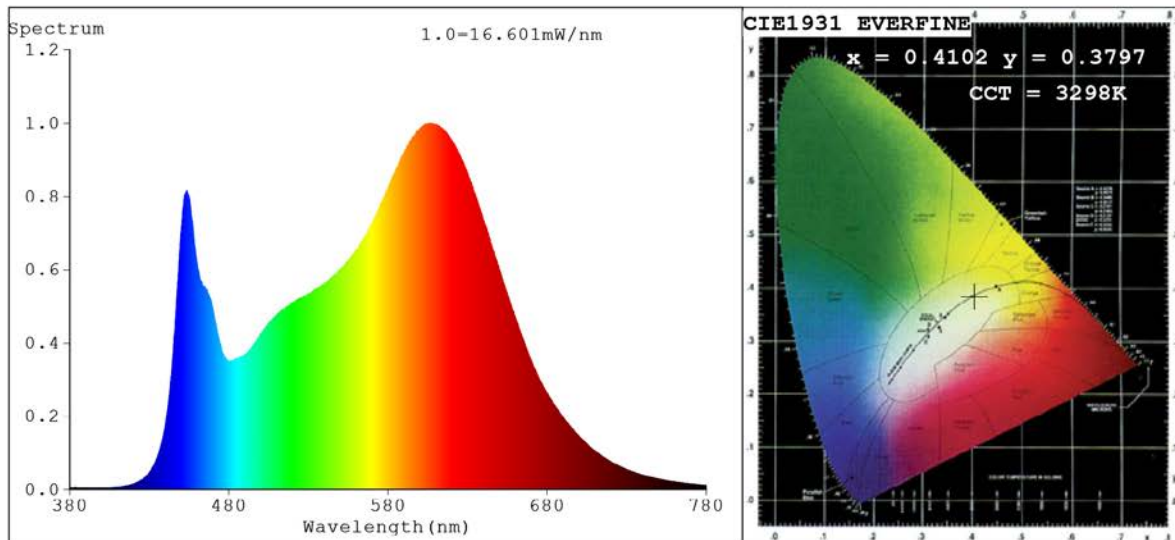


## Spectrum Test Report



### Color Parameters:

Chromaticity Coordinate:  $x=0.4102$   $y=0.3797$   $u'=0.2436$   $v'=0.5073$   
CCT=3298K (Duv=-0.0059) Dominant WL:  $\lambda_d = 584.4\text{nm}$  Purity=37.1%  
Ratio: R=22.9% G=73.1% B=4.0%; Peak WL:  $\lambda_p = 606.2\text{nm}$  FWHM=141.2nm  
Render Index: Ra=88.5 CRI=86.0 TM30: Rf=86 Rg=98  
R1 =92 R2 =98 R3 =91 R4 =88 R5 =93 R6 =93 R7 =83  
R8 =70 R9 =37 R10=98 R11=90 R12=79 R13=95 R14=96 R15=86

### Photo Parameters:

Flux = 824.7 lm Eff. : 78.00 lm/W  $\Phi_e$  = 2.641 W

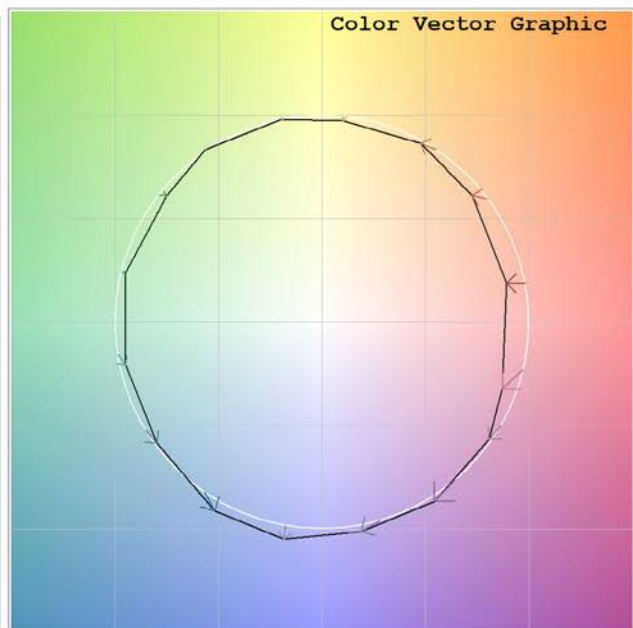
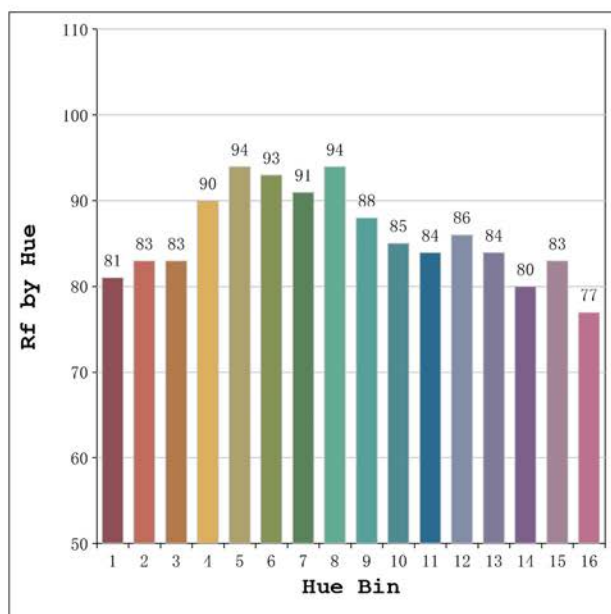
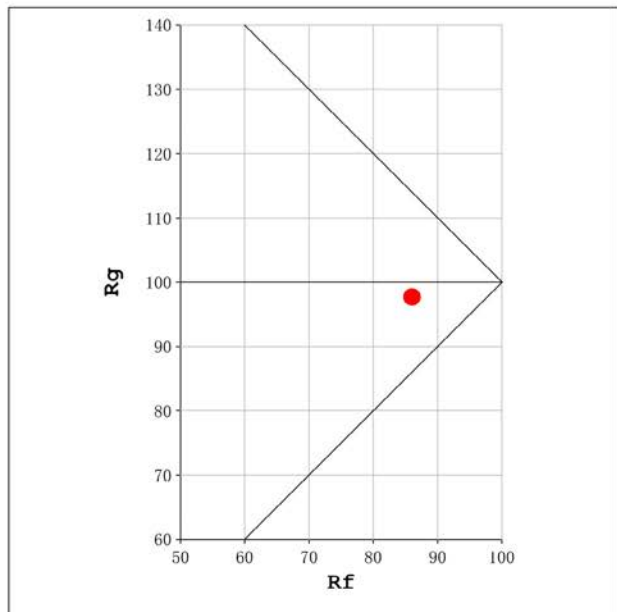
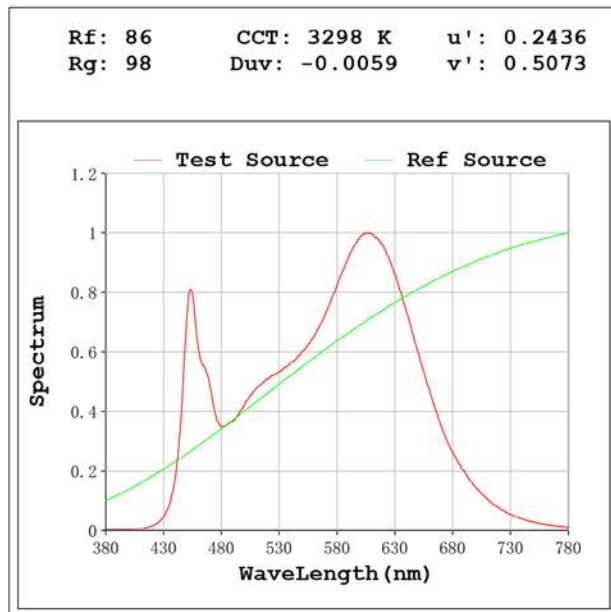
### Electrical parameters:

V = 23.998 V I = 0.4406 A P = 10.57 W PF = 1.000

Status: Integral T = 1520 ms  $I_p$  = 50650 (77%)

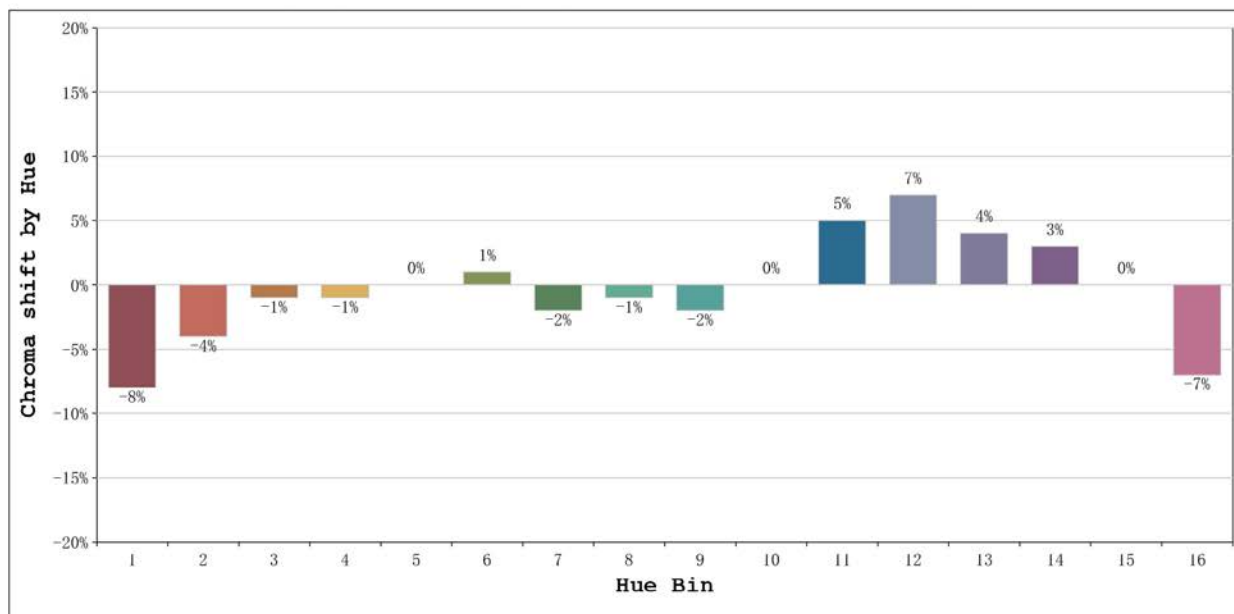
Model: Ecoled Vizcaya pro 3200K  
Tester: Sergio Carneros  
Temperature: 27Deg  
Manufacturer: Luz Negra S.L

Number: 33.204  
Date: 2024-01-16 15:55:38  
Humidity: 40%  
Remarks: tira flexible de 100cm



Model:Ecoled Vizcaya pro 3200K  
 Tester:Sergio Carneros  
 Temperature:27Deg  
 Manufacturer:Luz Negra S.L

Number: 33.204  
 Date:2024-011-16 15:55:38  
 Humidity:40%  
 Remarks:tira flexible de 100cm



			Graphic shift(%)	
Hue Bin	Hue Angle	Rf	Chroma	Hue
1	0.0° - 22.5°	81	-8	2
2	22.5° - 45.0°	83	-4	6
3	45.0° - 67.5°	83	-1	8
4	67.5° - 90.0°	90	-1	2
5	90.0° - 112.5°	94	0	1
6	112.5° - 135.0°	93	1	1
7	135.0° - 157.5°	91	-2	-1
8	157.5° - 180.0°	94	-1	1
9	180.0° - 202.5°	88	-2	6
10	202.5° - 225.0°	85	0	8
11	225.0° - 247.5°	84	5	9
12	247.5° - 270.0°	86	7	0
13	270.0° - 292.5°	84	4	-9
14	292.5° - 315.0°	80	3	-13
15	315.0° - 337.5°	83	0	-8
16	337.5° - 360.0°	77	-7	-10

Model:Ecoled Vizcaya pro 3200K  
Tester:Sergio Carneros  
Temperature:27Deg  
Manufacturer:Luz Negra S.L

Number: 33.204  
Date:2024-011-16 15:55:38  
Humidity:40%  
Remarks:tira flexible de 100cm